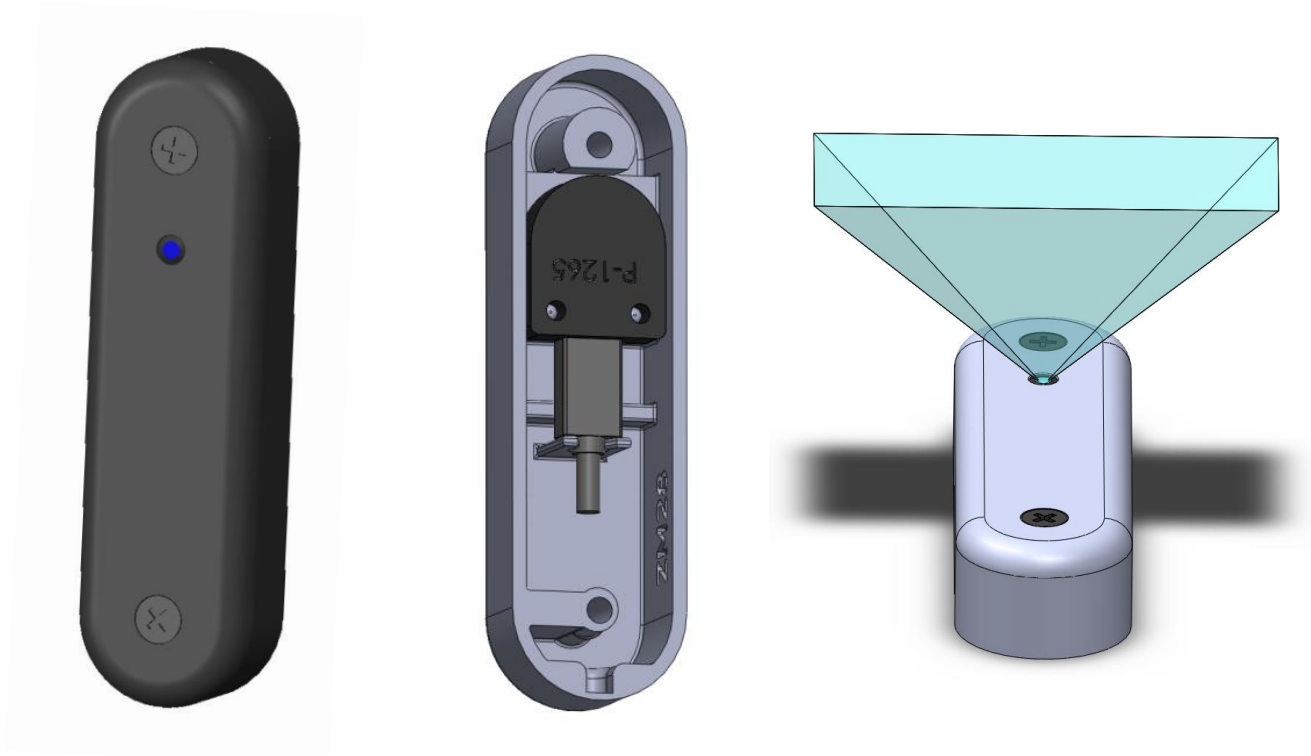


# ZM28 - Discreet Mount AXIS P1265

This mount is designed for the pinhole cameras AXIS P1265 and FA1125.

The design offer a discreet way to mount a pin hole camera, e.g. in a doorway.

The connector is secured and the cable may be routed through the wall or along the wall.

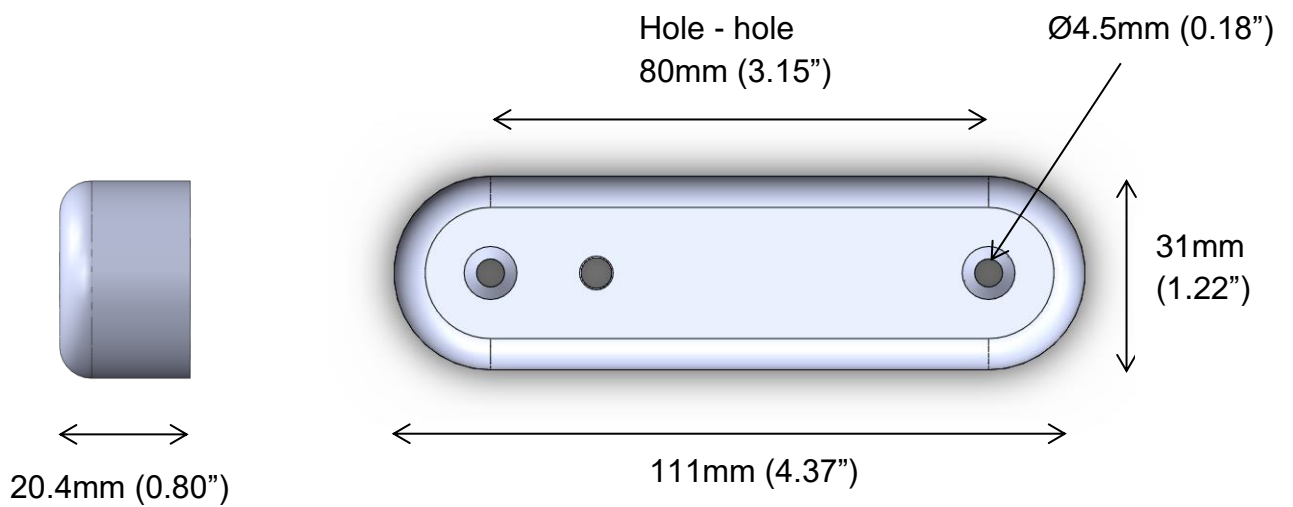
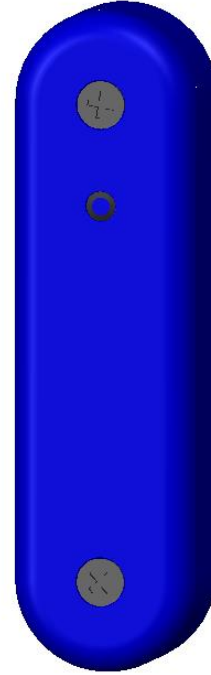
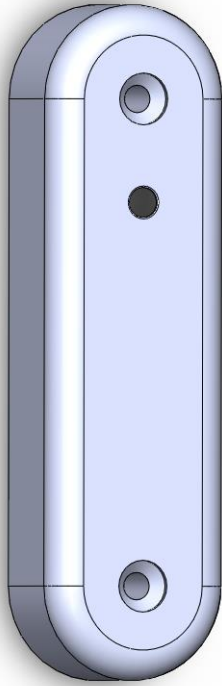


Order by using this link:

[ZM28 - Discreet Mount for AXIS P1265 and FA1125](#)

The parts are intended for indoor use.

# ZM28 - Discreet Mount AXIS P1265



The design is made for countersunk screws.