

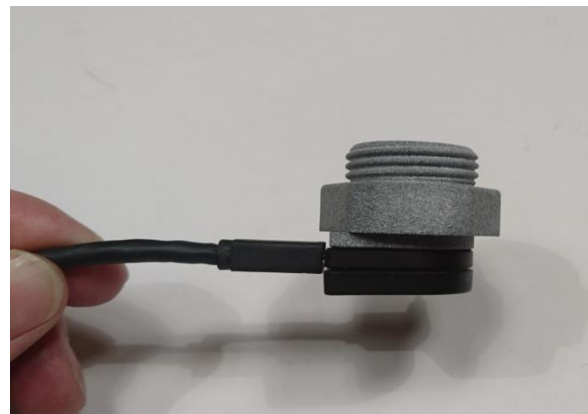
ZM32 - Covert Pinhole Nut 3/4"

This adapter nut is designed for modular pinhole cameras using an M20x1.5mm thread. The main purpose is to make a covert installation, but it also opens up many ways to mount a modular pinhole camera. Note that the mount is optimized to be covert. The image from some cameras may show (very small) dark corners.

The adapter makes it possible to mount the cameras in electrical junction boxes and other sheet metal products. The outer thread works with 3/4" conduit locknuts.

The nut comes with spacers and 3/4" nuts. Choose the right spacer and nut depending on your application and tolerances.

Cameras that fit are AXIS P1265/FA1125 and F1025.



The adapters come in sets with spacers and nuts.

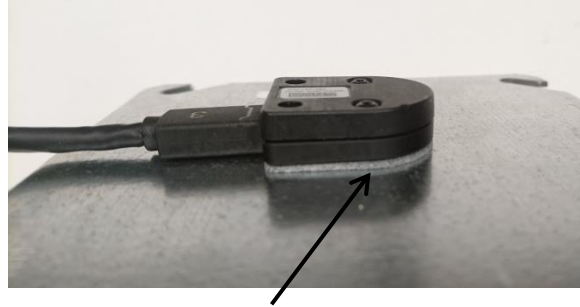
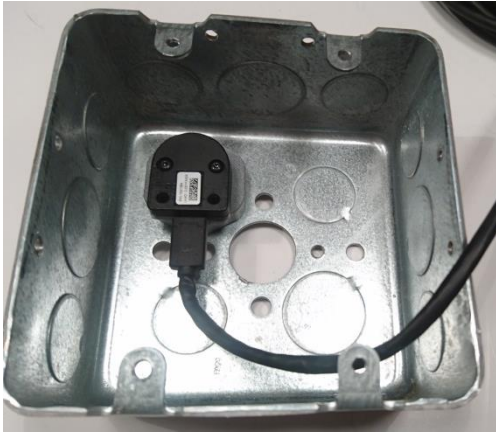


Order by using this link:

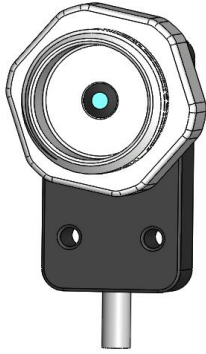
[ZM32 - Covert Pinhole Nut 3/4"](#)

The parts are intended for indoor use.

ZM32 - Covert Pinhole Nut 3/4"

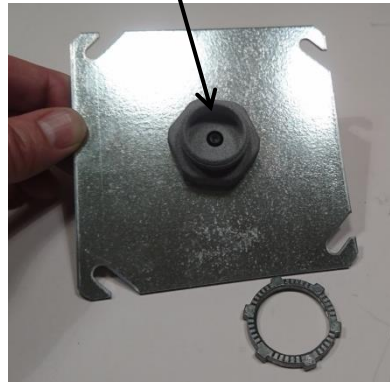


Spacers with different thickness are included.



AXIS F1025

The M20 Thread fits 1/2" conduit holes.



The outer thread fits 3/4" conduit holes.

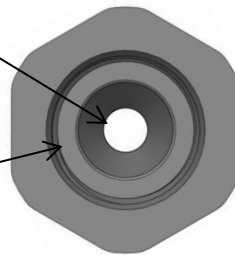


The camera M20 thread, or the outer 3/4" thread, may be used to fasten the camera.

Lens Hole Diameter
Ø6mm (0.24")

Camera Thread
M20x1.5

Outer Thread
3/4" - 14 TPI



35mm (1.38")

16mm (0.63")