

ZM33 - Covert Adapter M20 to 3/4"

This adapter is designed for modular cameras using an M20x1.5mm thread. The main purpose is to make a covert installation, but it also opens up many ways to mount a modular camera.

The adapter makes it possible to mount the cameras using standard 3/4" products, like electrical junction boxes, conduits, joints, fittings and locknuts. It can also be mounted in a 3/4" threads used in plumbing.

Cameras that fit are AXIS P1245/FA1105, F1005-E, P1214 and P1214-E. The adapter may be cut to fit other cameras.



The adapters come in sets of 4 pcs.

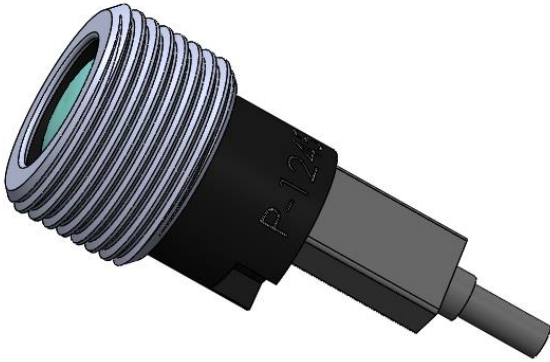
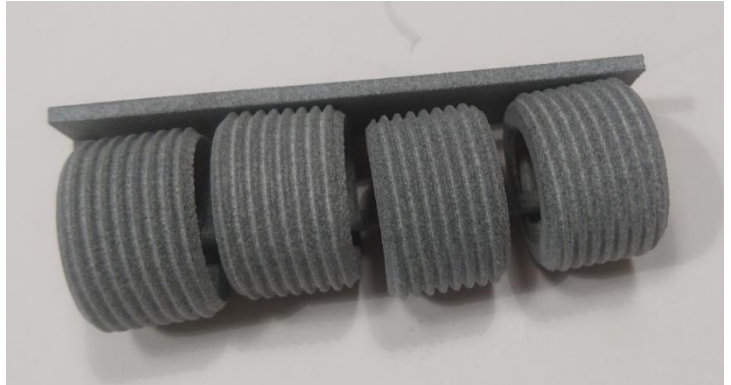


Order by using this link:

[ZM33 - Set of 4 pcs Covert Adapter M20 to 3/4"](#)

The parts are intended for indoor use.

ZM33 - Covert Adapter M20 to 3/4"



AXIS P1245/FA1105

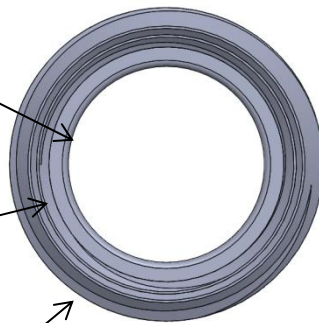


AXIS F1005-E

Lens Hole Diameter
Ø16mm (0.63")

Camera Thread
M20x1.5

Outer Thread
3/4" - 14 TPI



16mm (0.63")